



**THE COMMERCE SOCIETY**  
**SHRI RAM COLLEGE OF COMMERCE**




# THE COMSOC GAZETTE



**MARCH 2023**

Date of Issue: 15th March 2023

# TABLE OF CONTENTS



- 01** **FINANCE & INVESTMENT**

---
- 02** **SCIENCE & TECHNOLOGY**

---
- 03** **GEOPOLITICAL**

---
- 04** **STOCK MARKET & TREND ANALYSIS**

---
- 05** **ECONOMY**

---
- 06** **METaverse**

---
- 07** **RESOURCE GUIDE**

---
- 08** **COMSOC GENIE**

---

# FINANCE & INVESTMENT

## 01 HOW SILICON VALLEY BANK COLLAPSE IMPACTED A 116-YEAR-OLD INDIAN BANK:

The collapse of Silicon Valley Bank, the worst failure in retail banking since the global financial crisis, has had far-reaching effects that are still being determined. Almost 13,000 kilometers away in Bombay, a 116-year-old co-operative bank is an unanticipated casualty of the sudden demise of the US bank. Mumbai's SVC Co-operative Bank clarified on Twitter that it was not the main financier of US businesses. "The California-based Silicon Valley Bank (SVB) has no connection to SVC Bank. We kindly ask that our members, consumers, and other stakeholders disregard unfounded rumors and malicious rumor-mongering by unscrupulous individuals implying brand name similarity." Naturally, SVC, established in 1906, has no apparent connection to Silicon Valley Bank, a US-based institution that was shut down on Friday by California banking officials. The action was taken during a tumultuous 48 hours during which the share price of the high-tech lender fell amid a run-on deposit by worried consumers. Global markets have been rocked by the SVB's collapse, which specialized in venture capital financing. The Federal Deposit Insurance Corporation, or FDIC, is now in charge of over \$175 billion of the bank's customer accounts.

## 02 TOP ANNOUNCEMENTS IN THE MAHARASHTRA BUDGET:

1. The farmers would receive a 6,000 rupee annual cash bonus, according to the deputy chief minister and the state will pay 6,900 crore for the programme modeled after the PM KISAN Yojna of the federal government.

2. To evaluate the harm caused by natural calamities like unseasonal rainfall, the government would perform an electronic panchnama with the aid of drones and satellites. Fadnavis established a 5-lakh insurance policy for fishermen.

3. For farmers in 14 suicide-prone districts, the government has provided 1,800 monetary rewards.

4. The Maharashtra government recently unveiled the fourth comprehensive women's policy providing a girl from a BPL home with a monthly allowance of 75,000 until she turns 18 years old.

5. Fadnavis offered additional relief for women in the shape of 50% off of state-wide public transportation trips.

6. Introduction of the Led-Ladki programme, which would provide education grants to holders of yellow and orange ration cards.

7. Improvement in the lives of working women in Maharashtra as 50 new dormitories will be built.

8. Under the Mahatma Phule Jivandayee Yojna, Maharashtra extended the Mediclaim coverage provided to BPL households from 1.5 lakh to 5 lakh. From 1.5 lakh to 5 lakh rupees, the Mahatma Phule Janarogya Yojana's free medical care has been increased.

9. Out of the total, 300,000 homes will be constructed in 2023–2024. In Maharashtra, a welfare board for taxi and autorickshaw drivers will also be established.

10. A 1,000-acre tract near Nagpur will be used by the Maharashtra government to build a logistics hub. Moreover, Fadnavis stated that 46 km of metro lines are currently operational and that 50 km will do so this year. The project has a 337 km total planned length in the Mumbai Metropolitan Area.

## 01 INDIA'S FIRST HYBRID ROCKET LAUNCHED IN CHENGALPATTU DISTRICT OF TAMILNADU

India's first hybrid sounding rocket by private Organisations was successfully launched from Pattipulam village in the Chengalpattu district of Tamil Nadu. Martin Foundation, in association with Dr. APJ Abdul Kalam International Foundation and Space Zone India, launched the Dr. APJ Abdul Kalam Satellite Launch Vehicle Mission- 2023

The organisations mentioned that 5,000 students were involved in the project.

The selected students designed and constructed a student satellite launch vehicle (rocket) and 150 PICO satellite research experiment cubes that contained different payloads.

The reusable rocket was made by the selected top 100 students, while the rest made the satellites.

## 02 MICROSOFT TO UNVEIL GPT-4 WITH AI VIDEO NEXT WEEK

Microsoft is all set to release GPT-4 as early as next week, which will have the ability to create AI-generated videos from simple text prompts. Andreas Braun, Chief Technology Officer of Microsoft Germany, recently confirmed that GPT-4 will be unveiled next week at an event called AI in Focus – Digital Kickoff. We'll be introducing GPT-4 next week, where we have multimodal models that will offer completely different possibilities – for example, video,' said Braun. The report states that GPT-4 is the next iteration of OpenAI's Large Language Model (LLM), and should be significantly more powerful than GPT-3.5, which powers the current version of ChatGPT. ChatGPT and other GPT-3.5-powered technologies are currently limited to text-based responses.

## 03 LEXI: INDIA'S FIRST AI ASSISTANT POWERED BY CHATGPT ARRIVED IN INDIA

Lexi, is a AI powered chatbot is launch in India. Velocity, a financial technology firm, launched the chatbot to assist e-commerce owners by presenting them with business information in a simplified manner. Velocity insights, Velocity's proprietary analytics platform, has been linked with the this will be the Indian version of ChatGPT:

"We are thrilled to launch India's first chatbot tool that is integrated with ChatGPT. We have integrated this latest advancement in artificial intelligence with our existing analytics tool said the CEO and co-founder of Velocity, Abhiroop Medhekar, he have also added that after lexi product teams had been thinking of ways to use the ChatGPT technology for the benefit of their customers.

He said, "We strive to provide leverage to eCommerce founders. Ever since ChatGPT launched, our product teams have been brainstorming on how it can be leveraged to benefit our founders. Since Velocity customers already use Insights on a daily basis, we integrated ChatGPT with the same interface that they leverage for driving business spending, revenues, and so on.

It provides founders with necessary business insights, which can be accessed via WhatsApp in the form of a daily business report. Now that ChatGPT has been integrated in the same WhatsApp interface, customers will be able to use the AI, Lexi, for answering their queries.

Microsoft, which has partnered with ChatGPT's parent company OpenAI also launched a new version of Bing recently that has a chat option. The responses are similar to what ChatGPT provides. However, both Bing and Bard have their set of challenges as of now and are in the initial testing phases.

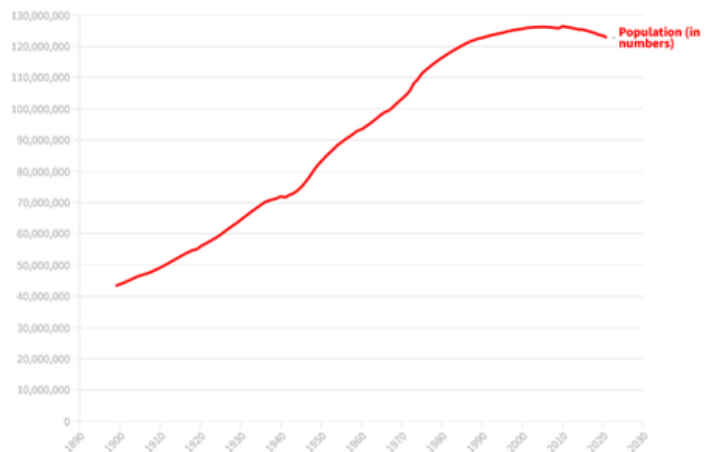
## 01 JAPAN'S POPULATION CRISIS: HOW DID IT GET SO BAD?

In 2022, 7,99,728 newborns were born in Japan, while 1.58 million individuals died over the same time period, according to data given by the health ministry. Despite the fact that this has been partly attributed by experts to the drop in weddings during the pandemic years, the data is nevertheless concerning for Japan, which already has one of the oldest societies in the world with a median age of 48.4 years. The nation's financial, healthcare, and employment markets are already feeling the repercussions. The fact that this year's Japanese Oscar entry, *Plan 75*, is a dystopian film about a government initiative to euthanize the elderly in order to address a super-ageing society is a testament to how deeply ingrained the issue is in Tokyo. The issue is not, however, peculiar to the East Asian country. Although on very different sizes, its closest neighbours China and South Korea have also experienced decreased fertility rates and population growth. On the other side of the world, European nations like Italy and Spain have witnessed a more gradual change in their demographics. While soldiers returned home and the economy was booming with jobs, the number of births rose during the post-war years, sometimes known as the "baby boom" years. In 1947, Japan had 34.3 births per 1,000 people, but the birth rate decreased throughout the years, eventually falling into the single digits at the start of the 1990s.

## 02 FRANCE AND BRITAIN AGREE NEW \$577 MILLION MIGRATION DEAL

In order to crack down on migrants arriving in Britain in small boats, Britain will pay France \$577 million over the course of the next three years. This money will go towards funding more patrols and better technology. At a summit intended to repair relations following years of conflict over Brexit, British Prime Minister Rishi Sunak and French President Emmanuel Macron unveiled the new agreement. The two nuclear-armed, permanent members of the UN Security Council met for the first time in five years. Both countries are major military forces in Europe. With the new agreement, Britain will contribute to the cost of a detention facility in France. Also, the two nations agreed to dispatch officers from the French and British National Crime Agencies to other nations.

Change in Japan's Population Through the Years



# STOCK MARKET & TREND ANALYSIS

## 01 ADANI IS NO LONGER A \$100 BILLION GROUP OUTLOOK

Adani Group's market capitalization has dropped below \$100 billion after a sharp decline in share prices. The group had joined the elite club of firms with a market cap of over \$100 billion in June 2021. However, the conglomerate has seen a significant sell-off in its stock since then, with concerns over its business practices and regulatory hurdles. Adani Group's market cap currently stands at around \$90 billion, down from its peak of \$140 billion in June. The group's founder, Gautam Adani, has also seen his net worth decline by over \$13 billion in the past month.

## 02 INDIAN STOCK MARKET WITNESSES VOLATILITY AS NIFTY SLIPS BELOW 15,000

The Indian stock market experienced a volatile trading session today, with the benchmark Nifty 50 index slipping below the crucial psychological level of 15,000. The index opened marginally higher but soon turned negative, weighed down by selling pressure in banking and financial stocks. The BSE Sensex also traded in the red, down over 200 points from the previous close.

Investors remained cautious ahead of the Reserve Bank of India's monetary policy review scheduled for next week. The central bank is expected to keep interest rates unchanged but could provide guidance on its future policy stance.

Market analysts predict that the stock market is likely to remain volatile in the near term, with the ongoing pandemic and global economic uncertainties posing challenges. Investors are advised to exercise caution and focus on quality stocks with strong fundamentals.

## 03 TATA MOTORS SHARE PRICE SURGES ON STRONG Q1 RESULTS, EV PLANS

Tata Motors' share price surged by over 5% today, following the announcement of its Q1 results and plans to expand its electric vehicle (EV) portfolio. The company reported a consolidated net profit of Rs 4,942 crore for the quarter ended June 2021, up from a loss of Rs 8,443 crore in the same period last year. The strong performance was driven by robust sales in the passenger vehicle and commercial vehicle segments, particularly in the domestic market. In addition, Tata Motors also announced plans to launch 10 new EVs over the next few years, as part of its commitment to sustainability and clean mobility. The company aims to become a leader in the EV space and has already launched the Nexon EV and Tigor EV in the Indian market. Market analysts predict that Tata Motors' EV plans and strong Q1 results are likely to boost investor confidence and drive further gains in the stock price. The automotive sector, particularly EV makers, is expected to see strong growth in the coming years, as governments around the world push for cleaner and greener mobility solutions.

# ECONOMY

## 01 INDIA'S RETAIL INFLATION SLOWS TO 6.4% IN FEB, STAYS ABOVE RBI'S TOLERANCE LIMIT FOR SECOND STRAIGHT MONTH

India's retail inflation declined marginally to 6.44 per cent year-on-year in February as against 6.52 per cent in January, data released by the Ministry of Statistics and Programme Implementation showed on Monday. The sequential inflation declined by 0.17 per cent. The inflation rate has remained above the Reserve Bank of India's (RBI) tolerance band of 2-6 per cent for the second straight month. The high inflation level can be attributed to rising food prices, which account for nearly 40% of the Consumer price index basket.

February CPI inflation at 6.44 per cent while elevated is broadly in line with expectations. Cereals and milk inflation continues to be high while fruits inflation spiked up too in February. Core inflation at 6.1 per cent remains elevated and sticky with relatively high inflation across clothing and footwear, health, personal care and effects, and household goods/services. The RBI will remain hawkish in the April policy as inflation prints have spiked back over 6 per cent in January-February along with core inflation remaining sticky above 6 per cent.



## 02 INDIA'S UNEMPLOYMENT RATE INCREASES TO 7.45% IN FEBRUARY

The unemployment rate in India inched higher to 7.45% in February 2023 from 7.14% in January 2023, bringing the total number of unemployed in the country to 33 million, compared to 31.5 million in January. This is on the back of a significant increase in rural unemployment after it was on a decline in the preceding four months. The unemployment rate was the highest in Haryana at 29.4%, followed by Rajasthan at 28.3% and Sikkim at 21%. "The overall rise in unemployment in India in the month of February was driven by a significant rise in unemployment, specifically in rural India. The rural labour force expanded by a mere 0.26 million and around 2.3 million people became unemployed in February. The number of unemployed persons in the labor force in India increased from 31.5 million to 33 million. While the rise in the unemployment rate was accompanied by a small increase in the labor participation rate, the employment rate in February remained at levels recorded in the previous month.



## 03 NTPC TO IMPORT 5.4 MILLION TONS OF COAL TO MEET GROWING SUMMER DEMAND

State-run electricity giant NTPC Limited is planning to import 5.4 million tons (MT) of coal in the first half of the financial year 2023-24 to operate all its thermal power plants (TPPs) to full capacity during the summer.

This will be an increase of 19 percent from last year when NTPC, the country's biggest power generating company, invited bids to procure imported 4.53 MT coal for blending with the domestic dry fuel in thermal plants. This is likely to be an annual affair during peak summers as TPPs mostly reel under the problem of dry fuel shortage due to a steep increase in demand. The tender is likely to be floated in April. The electricity demand has increased rapidly. The increase in the supply of domestic coal is not commensurate with the coal requirement of the thermal power plants and therefore, a need has arisen to import coal for blending purposes. Further, there are logistics constraints of Railways in transportation of coal in certain areas.





# METaverse

## 01 SOUTH KOREA DOUBLES DOWN ON METaverse, ANNOUNCES \$51 MILLION INVESTMENT IN RELATED PROJECTS

South Korea is increasing its bet to support the regional metaverse economy even if some private enterprises' enthusiasm in the metaverse has started to wane. The nation unveiled two programmes intended to aid metaverse projects and businesses creating products on top of virtual worlds. The first of these initiatives, which was unveiled on March 8, is a metaverse growth fund that would enable businesses to obtain funding directly from the South Korean Ministry of Science and ICT for the development of virtual enterprises. The organisation has set aside \$30 million for this. The development of 13 distinct regional projects is the focus of the second project, which was unveiled the following day. \$21 million has been allotted for the completion of this second project.

## 02 INTERPOL WORKING OUT HOW TO POLICE THE METaverse

Interpol is looking on how to police crime in the metaverse, according to Interpol Secretary General Jurgen Stock. The frequently discussed yet unrealized idea of humans being represented by 3D avatars in their online life is known as the metaverse. What is metaverse crime? Metaverse crime refers to criminal activities that are committed in virtual environments, such as the metaverse. As the metaverse continues to grow in popularity and user engagement, there is an increasing potential for criminal activities to occur in these virtual spaces. Metaverse crimes could include hacking and cybercrime, theft and property damage of virtual property, harassment and bullying, and intellectual property violations.

However, the definition of metaverse crime is still largely undefined, and there are no widely accepted policies or regulations in place to address it. As such, the policing of metaverse crime will likely require collaboration and innovation between law enforcement agencies, technology companies, and legal experts to develop new approaches and policies for addressing criminal activities in virtual environments.



## 03 DECENTRALAND METaverse FASHION WEEK 2023 SET TO RELEASE IN MARCH

One of the most well-known metaverse platforms, Decentraland, has announced the Metaverse Fashion Week (MVFW), which will take place between March 28 and March 31, 2023, and will showcase the most recent and upcoming developments in digital fashion and metaverse interoperability. Future Heritage is the subject of MVFW23, which aims to unite fashion designers and artisans from around the world.

In partnership with Spatial, one of the biggest 3D social networks, and OVER, a decentralised infrastructure for the AR metaverse, Metaverse Fashion Week will return in the spring of 2023. While MVFW23 will take place in several different metaverses, Metaverse Group will showcase the virtual clothing at Decentraland's Luxury District. The virtual boutiques of international fashion companies like Dolce & Gabbana, Tommy Hilfiger, Ben Bridge, and DNKY will be on show.

# RESOURCE GUIDE

## 01 QUANTS UNLOCKED

1. If an amount of 793520 is equally distributed amongst 28 persons, how much amount would each person get?
2. A horse is tied to a peg hammered at one of the corner of a rectangular grass field of 40 m by 24 m by a rope 14 m long. Over how much area of the field can the horse graze?
3. If (38) is subtracted from the square of a number, the answer so obtained is 10664. What is the number?
4. Find the value of  $(1/(2*3)) + (1/(3*4)) + (1/(4*5)) + (1/(5*6)) + \dots + ((1/(9*10)))$ .
5. The smallest number, which when subtracted from the sum of squares of 11 and 13 gives a perfect square, is
6. What is the ratio of third proportional to 12 and 30 and the mean proportional between 9 and 25?

## 02 DIY CORNER

- 1) If 'a' is positive and  $a^4 - 62a^2 + 1 = 0$ , find the value of  $a^3 + 1/a^3$   
1] 648 2] 392 3] 488 4] 512
- 2) A dishonest shopkeeper sells sugar at cost price but makes 25% profit by using faulty weights. He decides to give a discount to attract more customers. What percent of discount should he offer to make 12% profit?  
1] 15.2% 2] 12.5% 3] 10.4% 4] 13%
- 3) One hundred identical coins each with probability p of showing up heads are tossed once. If  $0 < p < 1$  and the probability of heads showing on 50 coins is equal to that of heads showing on 51 coins, then the value of p is  
(a) 1/2  
(b) 49/101  
(c) 50/101  
(d) 51/101

- 4) If the values of regression coefficients are  $-0.33$  and  $-1.33$ , then the value of coefficient of correlation between the two variables, is correlation between the two variables, is  
(a) 0.2  
(b)  $-0.66$   
(c) 0.4  
(d)  $-0.4$
- 5) If in an infinite G.P. first term is equal to the twice of the sum of the remaining terms, then its common ratio is  
(a) 1  
(b) 2  
(c) 1/3  
(d)  $-1/3$

## 03 VERBAL DEMYSTIFIED

Here are a few idioms and phrases on hard work and what importance it holds in our lives:

1. Teamwork makes the dream work
2. The devil finds/makes work for idle hands
3. Many hands make light work
4. Only fools and horses work
5. Work your fingers to the bone
6. Burn the candle at both ends
7. Let's put a pin in it
8. Too many chiefs, not enough Indians



# RESOURCE GUIDE

## 04 GENERAL AWARENESS

Here's a list of the world organisations and their headquarters:

### World Organisation - Headquarter

United Nations Organisation (UNO) - **New York**

United Nations Environment Programme (UNEP)  
Nairobi - **Kenya**

United Nations High Commission for Refugees (UNHCR) - **Geneva**

United Nations Development Programme (UNDP)-  
**New York**

United Nations Population Fund (UNFPA) - **New York**

United Nations Educational Scientific and Cultural Organisation (UNESCO) - **Paris**

World Health Organisation - **Geneva**

International Monetary Fund Washington  
Commonwealth - **London**

Organisation of Petroleum Exporting Countries (OPEC) - **Vienna**

World Wildlife Fund (WWF) Gland - **Switzerland**

United Nations Conference on Trade and Development (UNCTAD) - **Geneva**

International Olympic Committee (IOC) - **Lusane**

League of Arab States Cario - **Egypt**

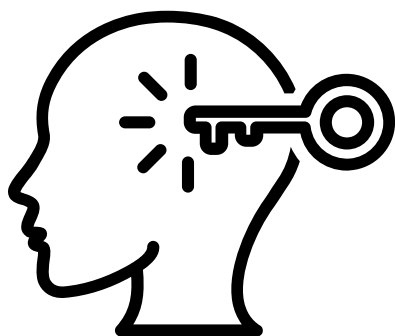
Amnesty International - **London**

Asian Development Bank Manila - **Philippines**

Association of South-East Asian Nations (ASEAN)  
- **Jakarta**

North Atlantic Treaty Organisation (NATO) -  
**Brussels**

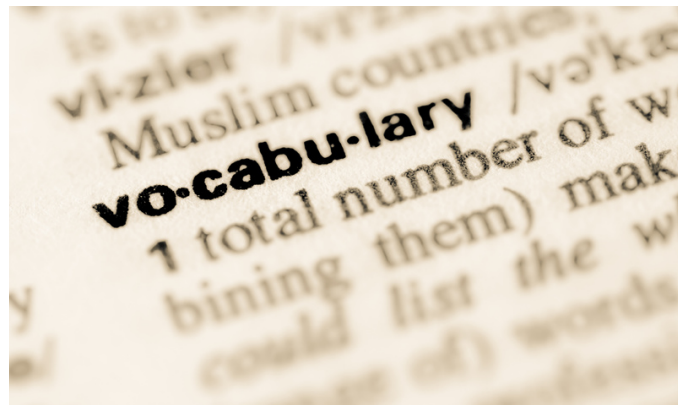
African Union (AU) Addis - **Abada**



## 05 VOCAB-O-PEDIA

**Stock split:** A stock split is a corporate action in which a company increases the number of its outstanding shares by issuing new shares to its existing shareholders. The purpose of a stock split is to make the company's stock more affordable and accessible to a wider range of investors. In a stock split, the total value of the company's shares remains the same, but the price per share is reduced proportionally to reflect the increased number of shares. For example, in a 2-for-1 stock split, each shareholder would receive two shares for every share they currently hold, and the price per share would be cut in half.

**Price-to-Earnings Ratio (P/E Ratio):** The P/E ratio is a valuation ratio that measures a company's current stock price relative to its earnings per share (EPS). The P/E ratio is calculated by dividing the current market price per share by the EPS. The P/E ratio is commonly used as an indicator of how expensive or cheap a stock is relative to its earnings. A high P/E ratio may indicate that investors have high expectations for the company's future earnings growth, while a low P/E ratio may indicate that investors have low expectations.



## 06 STATIC GK

### ILO

International Labour Organization (ILO): The International Labour Organization (ILO) is a specialized agency of the United Nations (UN) that was founded in 1919 to promote social justice and promote decent working conditions worldwide. It brings together governments, employers, and workers of its 187 member states to develop and promote international labor standards, policies, and programs that improve working conditions and promote social and economic progress. The ILO's work covers a broad range of labor issues, including child labor, forced labor, employment and social protection policies, occupational safety and health, social dialogue, and the rights of workers to organize and bargain collectively. It also provides technical assistance and training to member states and undertakes research and analysis on labor market trends and issues.



### OPEC

Organization of the Petroleum Exporting Countries (OPEC): The Organization of the Petroleum Exporting Countries (OPEC) is an intergovernmental organization established in 1960 by five founding members: Iran, Iraq, Kuwait, Saudi Arabia, and Venezuela. It currently has 13 member states, including Algeria, United Arab Emirates, and Nigeria.



OPEC's primary objective is to coordinate and unify the petroleum policies of its member states to secure fair and stable prices for petroleum producers and a regular supply for consumers. It achieves this by setting production quotas for each member state and adjusting them periodically to manage global oil supply and demand. OPEC also engages in research and

analysis of energy market trends and participates in international energy dialogues and negotiations

## MOVIE RECOMMENDATION

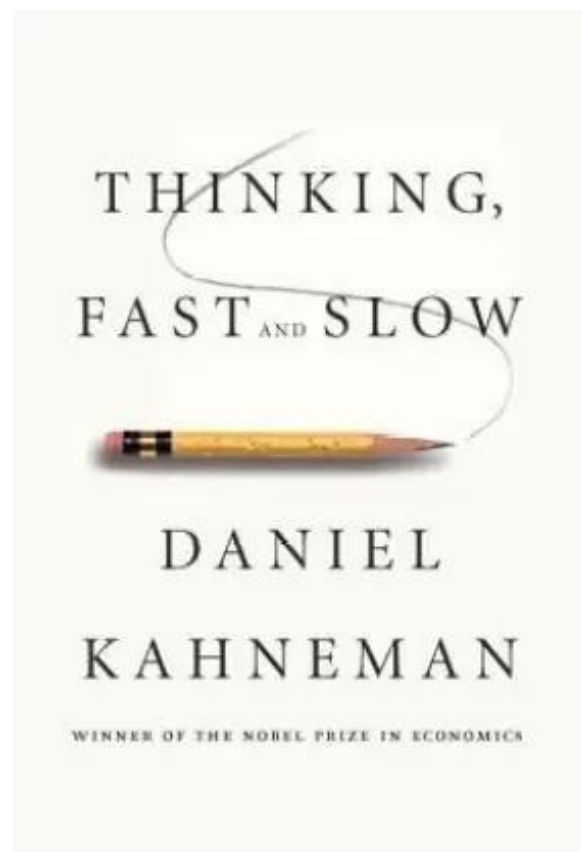
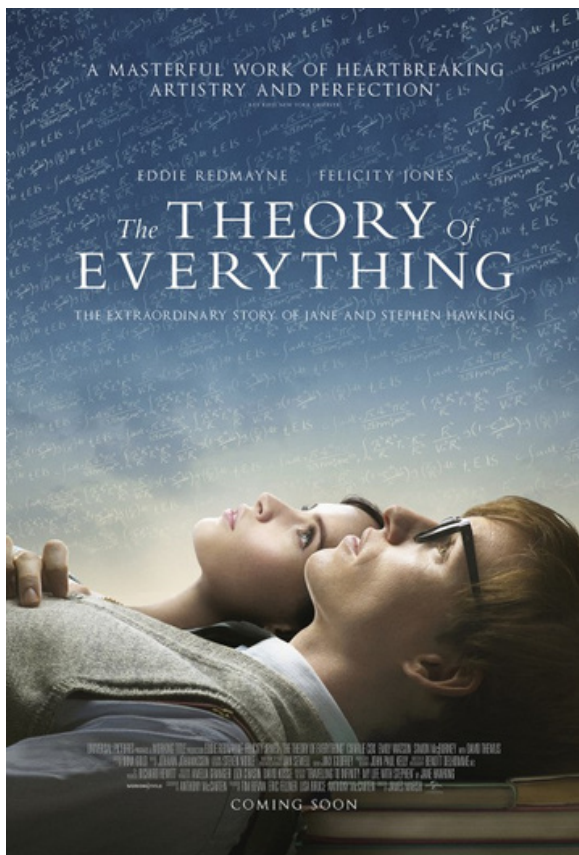
### THEORY OF EVERYTHING

Stephen Hawking, a student of astrophysics, is attempting to choose a thesis topic. He decides to write about black holes after hearing a presentation on them and speculating that they might have been a component of the creation. He receives a motor neuron disease diagnosis and is informed of its implications. Jane, his girlfriend, is adamant about remaining with him, but it is clear that the marriage is no longer feasible after she spends years juggling taking care of Stephen, raising children, and completing her own thesis. But the divorce isn't the end of the narrative. This inspiring movie explores themes of endurance, tenacity in the face of adversity, and unselfish love. The list of the top films for the classroom must include *The Theory of Everything*!

## BOOK RECOMMENDATION

### THINKING FAST & SLOW - DANIEL KAHNEMAN

This book separates the emotional aspect from taking business decisions. That is why this book by Daniel is one of the best books to read for students in the self-help category. Wonderful, yet still unexplored, is the human intellect. But Kahneman can tell you that two systems shape our thought processes. This book will not only get you thinking, but it will also change the way you think if you're seeking a fascinating conversation about the human mind.



## MYTH BUSTERS

### 01 CREDIT CARDS SERVE AN EMERGENCY PURPOSE

As long as there is enough balance on the credit card, there is no need for an emergency fund. Sorry to burst the bubble but credit cards do not serve an emergency purpose at all. A person who just lost his/her job will not be able to pay rent or home loan EMI through credit card. A one-time major car repair or the automated bills cannot be paid through credit card either.

Having an emergency fund is a must. It should have at least 6-9 months expenses covered along with the cost of the last emergency. Even if the person loses a job, he will have enough time to search for another one. It also reduced an enormous amount of stress during unemployment.

### 02 BUYING A HOME IS BETTER THAN RENTING

Owning a house comes with the satisfaction of fulfilling a life goal. It's more of an emotional decision than a rational one. Having a home is considered as a good investment. However, sometimes buying a home doesn't make sense. At the starting of a career, or staying for short durations in a place, renting is more sensible. Renting is cheaper, and one can concentrate on their job without thinking about maintaining a house and paying loan EMIs. Renting or owning a home depends on many factors that need to be thoroughly analysed.



### 03 TO INVEST ONE NEEDS TO BE RICH

One doesn't have to be wealthy to invest. One can invest with an amount as low as Rs 500 a month through SIPs in mutual funds. With more increased access to trading and investing through multiple platforms, investing has become as easy as online shopping. It is not about the amount you earn, but the amount you save makes you rich. Start investing regularly in small amounts with consistency for the long term to build a sizeable corpus.





*Thank you for reading!*

**Hope you enjoyed the content.  
Stay tuned for the next edition!**